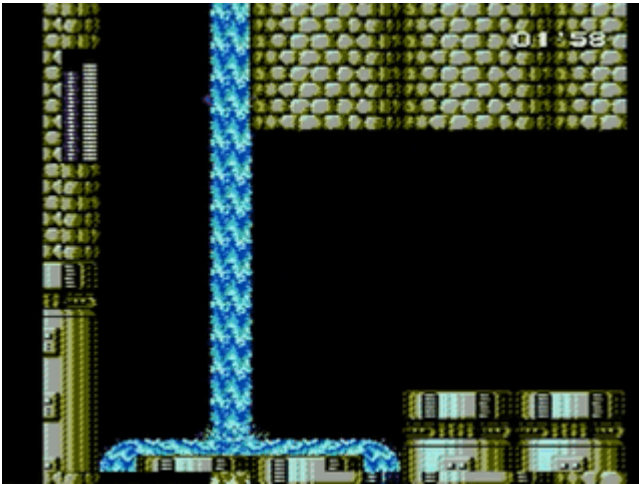


Escaroo Snail Midbosses

Use Bright BEFORE the snail fully forms, then jump through the hitbox. On the first Escaroo, this is trivial.

On the second Escaroo, if you take a death, the second time you enter the screen, there is a frame perfect soft lock if you Flash/use Bright on the first frame you have control.



Optimally, you can tap right to Back-boost through the escaroo hitbox. If you get knocked to the left, it is recommended to hold left to make sure you don't fall in the pit.

Jumping through the screen transition saves a jump on the other side to the ledge, so you can immediately slide jump to the platform.

Revision #2

Created 14 July 2024 01:26:31 by mrcab55

Updated 14 July 2024 01:35:41 by mrcab55