

Slash Man

Jurassic Jungle

- [Slash Screen 1 and 2 - Logs](#)
- [Slash Screen 3 and 4 - Dino Spikes](#)
- [Slash Screen 5 - Dino Bot](#)
- [Slash Screen 6 - Frogs and maybe Beat](#)
- [Slash Screen 7 - Eggs](#)
- [Slash Man Fight](#)

Slash Screen 1 and 2 - Logs

Screen 1

Screen 1 has classic logs on waterfalls platforming.

No matter your strat, start by sliding up to the first waterfall as fast as you can, boosting through the Dino. Timing matters.

Safe and Slow

Use Rush Jet. Get on top of the screen and maybe be wary of the birds at the end, but otherwise you should make it without a problem.

The next screens call for rush Jet anyway, so switching isn't entirely bad.

Faster and Dangerous

Jump the the waterfall with logs (the first one you just jump over). The moment you see water cresting over the edge signaling a new log, slide to it. Jump to the next ledge.

Repeat this with the next two water falls. When you see the next log appearing, immediately slide to it.

The rest of the screen is just slide jumps and avoiding the birds. Get up the ladder on to screen 2.

Screen 2

Climb to the top of the ladder. If you are not already on Rush Jet, pause and switch to Rush Jet (you need Rush on screen 3 anyway). Use Rush Jet from the top platform to the top of the left ladder and climb up.

Slash Screen 3 and 4 - Dino Spikes

Screen 3

Intended Strats

Ride the dinosaurs across the spikes, shooting or avoiding the flying enemies as they go.

Speed Strat

Slide close to the dino, then summon Rush Jet.

Remember Rush gets injured and teleports away when hit by an enemy.

Ride Rush somewhat low through the first section, shooting lemons to kill the flying enemies.

Once you pass the enemy that spawns just in front of the second dino, hold up to fly all the way up. There is one enemy that may come close but it will not hit you.

When you see the ladder, climb it unless you want the E-Tank.

There is an E Tank just past the ladder, high on the screen. You can collect it by flying high with Rush, then slide jumping back left to the platform near the ladder. This is not needed for any category and is just a safety.

Screen 4

Just get to the ladder on the right side of the platform and go to screen 5. Use T. Strike on the Sniper Joe if you want to kill it.

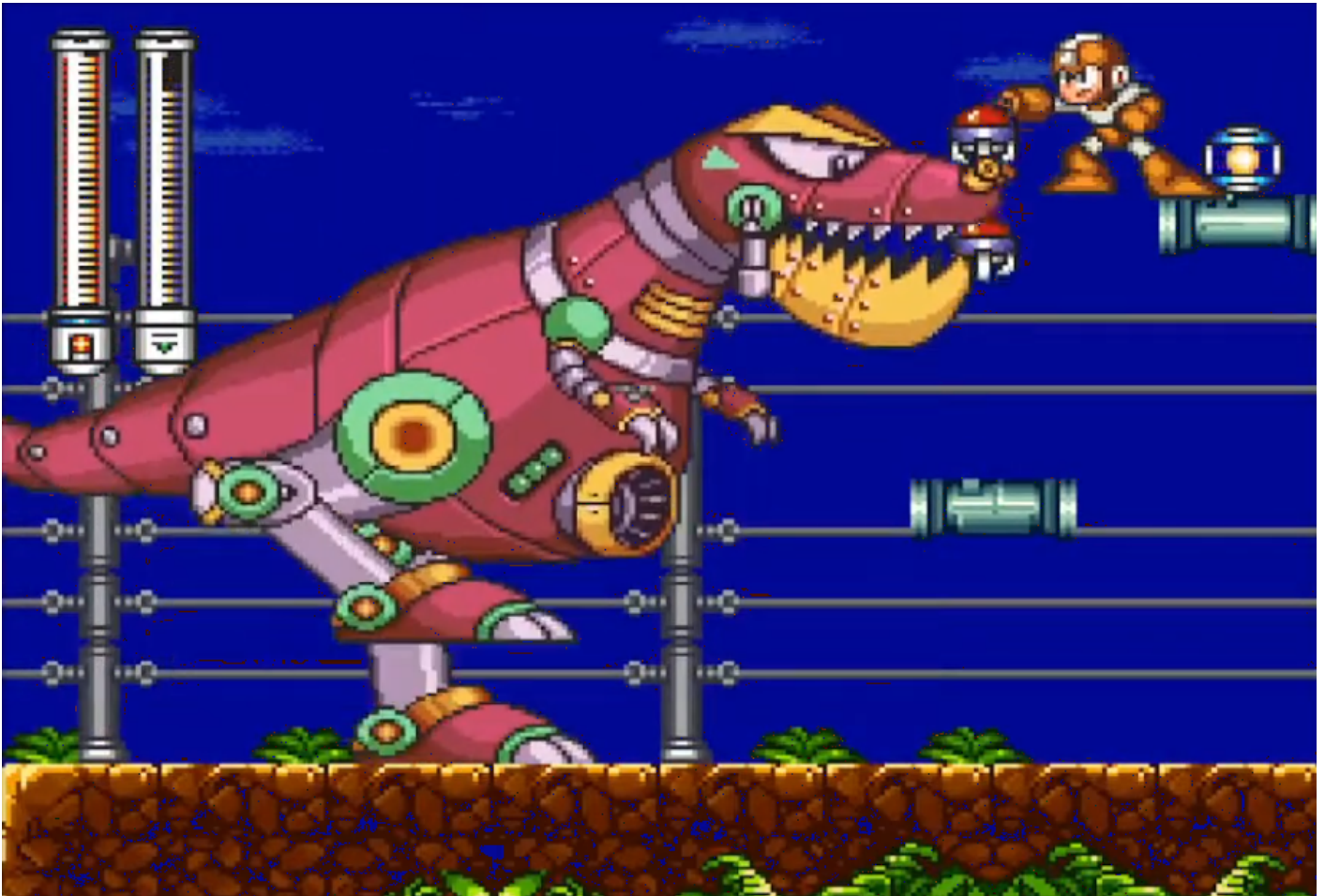
Switch to Junk Shield or Danger Wrap for the next screen.

Slash Screen 5 - Dino Bot

King Gojulus

The next screen has some spike pits and a big dinosaur stomping up behind you. There are two main strats. Get onto the top right platform and switch to your weapon.

Danger Wrap



When the dino walks up, hold down and mash Y to drop bombs. If it backs away, drop to the lower platform and let bombs drift up into it. If you run out of ammo, switch to the Junk backup.

Junk Shield

A laggier but more consistent strategy is to use junk shield repeatedly. It should only take 2 or 3 shields.

Slash Screen 6 - Frogs and maybe Beat

Frogs

Shoot slide frogs, jump (and shoot) when needed. Get to the next screen

Beat

Beat is entirely optional for any% and a recommended skip. Beat is REQUIRED for 100%

Use scorch wheel while touching the leaves of the trees. One of the last trees will reveal a ladder.

Climb the ladder and find beat's cage. Hit it with a full charge buster shot to release beat.

Slash Screen 7 - Eggs

Slide through as much of the screen as possible, including sliding through 3 of the 4 eggs. Only the 3 egg gets avoided entirely at optimal pace.



Slash Man Fight

Slash Man has an annoying habit of jumping above the screen to "drop ketchup" after 2 hits. As such, a goal of the fight is to minimize the number of times he goes off screen.

This can be done by delaying the shots of Freeze Cracker until after some charged Buster Shots have been delivered.

- a Four cycle fight is relatively simple - one charged buster shot and one freeze cracker per cycle. You must connect with both shots all 4 cycles.
- a Three cycle fight can be achieved by timing the second buster shot. You need Slash Man to commit to his slash attack when you hit with the second buster shot, so there is time to hit with the freeze cracker. You only need 2 cycles of 2 buster shots, but you do need all 3 freeze crackers.

Alternate Weaknesses

Slash is weak to both Ice and Fire. Fire is clumsy and not conducive to the above strategies, so we recommend avoiding it.